

Security as a Foundation for Innovation



THE RHODE ISLAND CEO COUNCIL



Envision
Technology Advisors, LLC

Hello. I'm Todd.

Continue the conversation



 **Envision**
Technology Advisors, LLC

TODD KNAPP
FOUNDER & CEO

 Todd.Knapp@envisionsuccess.net

 401-272-6688

 www.envisionsuccess.net

 @Envision_Todd

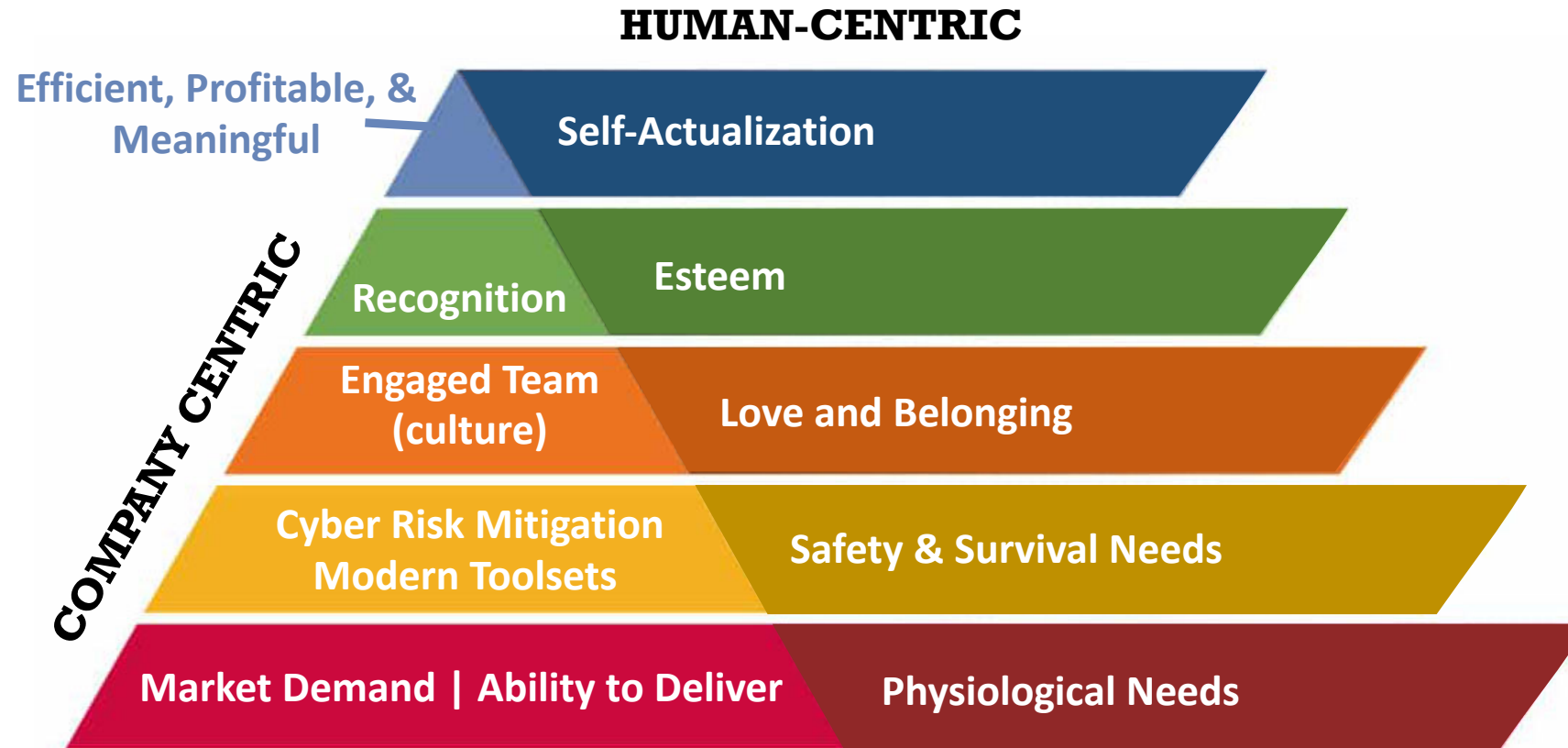


THE RHODE ISLAND CEO COUNCIL

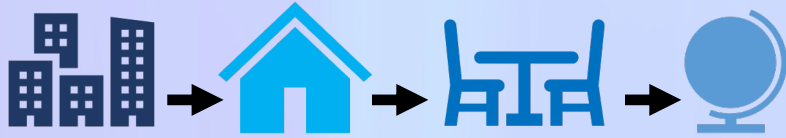


“Perfection is the enemy of progress”

Maslow's Hierarchy Applied to Business



Security is Part of a Larger Picture



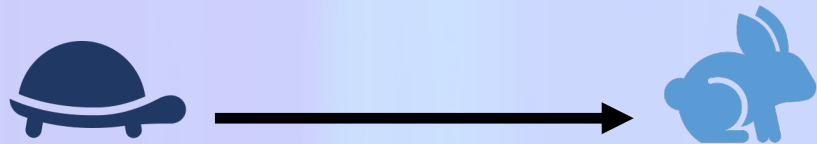
Geo-Independent
(Complete experience, from anywhere)



Digital Fluency
(User training & awareness)



Secured, not Constrained
(Data liberation, built-in & portable security)



Efficient & Agile
(automation workflow apps, & universal access)



Strategic | Data-Powered
(Data analytics, anomaly detection, & automated response)



THE RHODE ISLAND CEO COUNCIL

Zero Trust Simplified

Step 1



Step 2



Step 3



Opportunities Are Everywhere



Personal Efficiency

Communication & Collaboration



Process and Policy

Customer Interface & Interaction



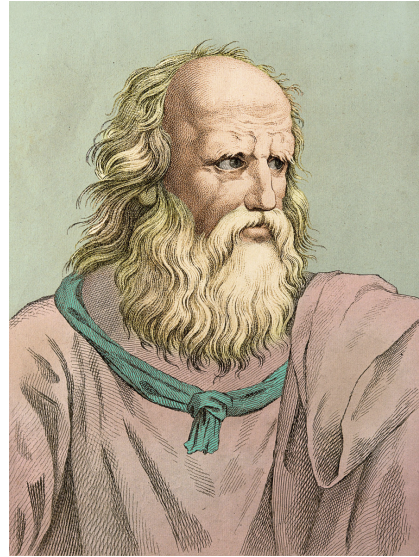
Productization and Marketing

Finance & Revenue Streams



THE RHODE ISLAND CEO COUNCIL

“So... What’s this have to do with security?”



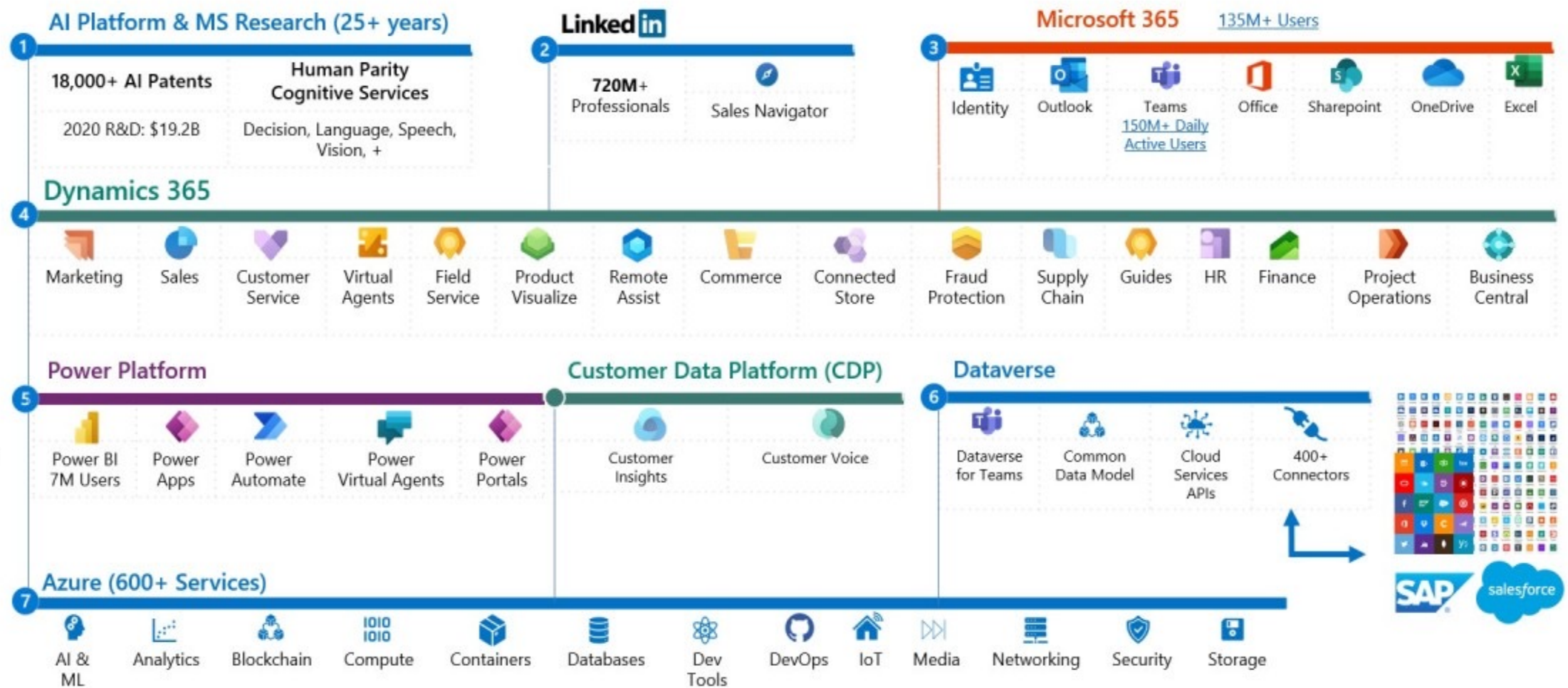
Microsoft's Business Applications are built on **Azure**, using a **Common Data Model** that unifies data in **Dataverse**. **Power Platform** is the low code development platform for Microsoft's **Office 365**, **Teams**, **Dynamics 365** business applications (CRM & ERP) and integrates with **400+ services**.

64K+ Partners

Analyst Recognition:

- 1) Analytics & BI
- 2) API Management (Full Lifecycle)
- 3) Cloud DBMS
- 4) Cloud Infrastructure
- 5) Content Services Platforms
- 6) CRM Customer Engagement
- 7) CRM Customer Service Solutions
- 8) CRM Lead Management
- 9) CRM Sales Force Automation
- 10) Data Integration Tools
- 11) Data Science & ML
- 12) ERP (Cloud)
- 13) IoT (Industrial)
- 14) Low-Code App Platforms
- 15) Meeting Solutions
- 16) Robotic Process Automation (RPA)
- 17) Security: Access Management
- 18) Security: CASB
- 19) Security: Endpoint Protection
- 20) Security: Ent. Info Archiving
- 21) Security: Unified Endpoint Mgmt

Industry Solutions






A Fresh look...

Risk as Opportunity?

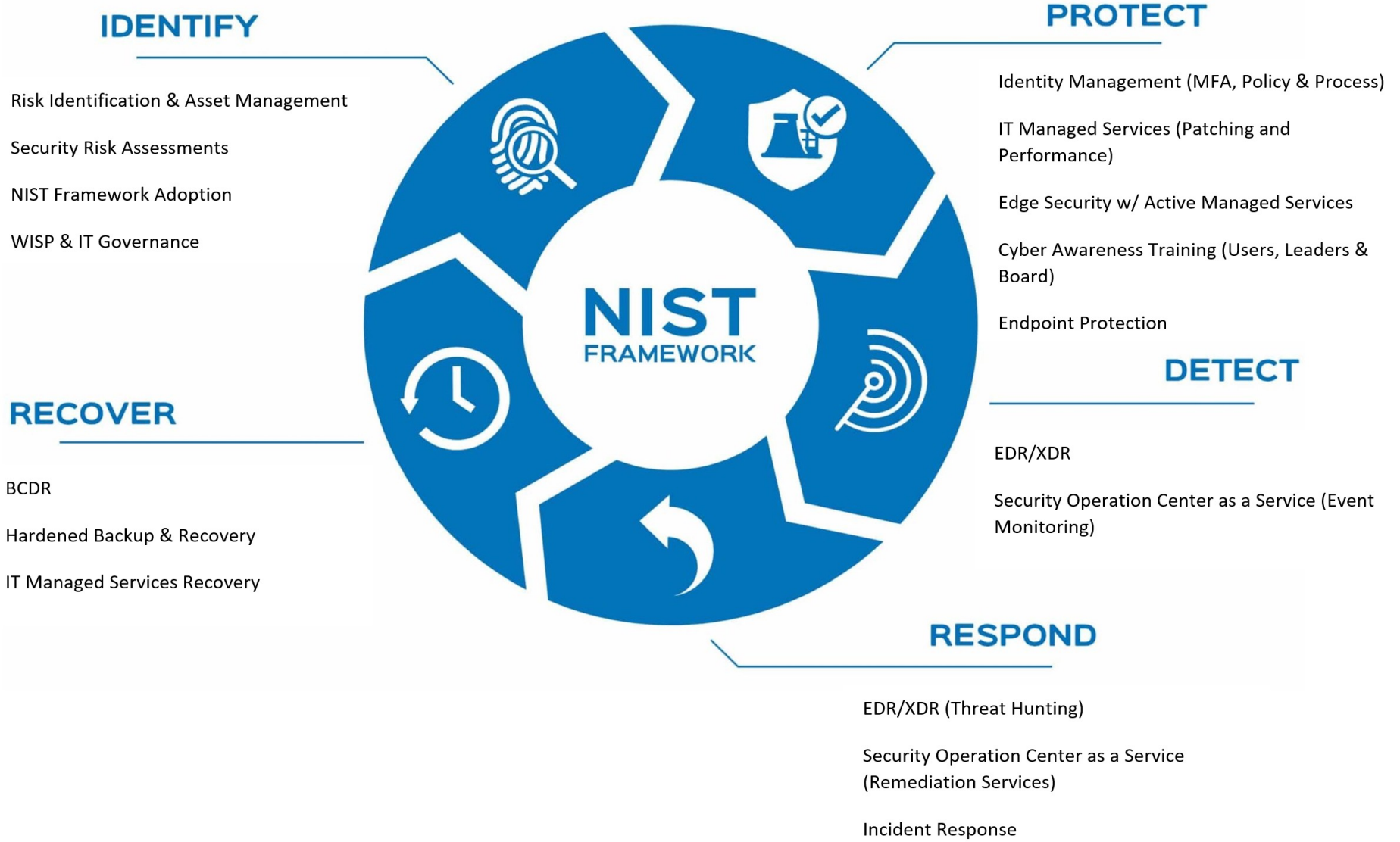


THE RHODE ISLAND CEO COUNCIL

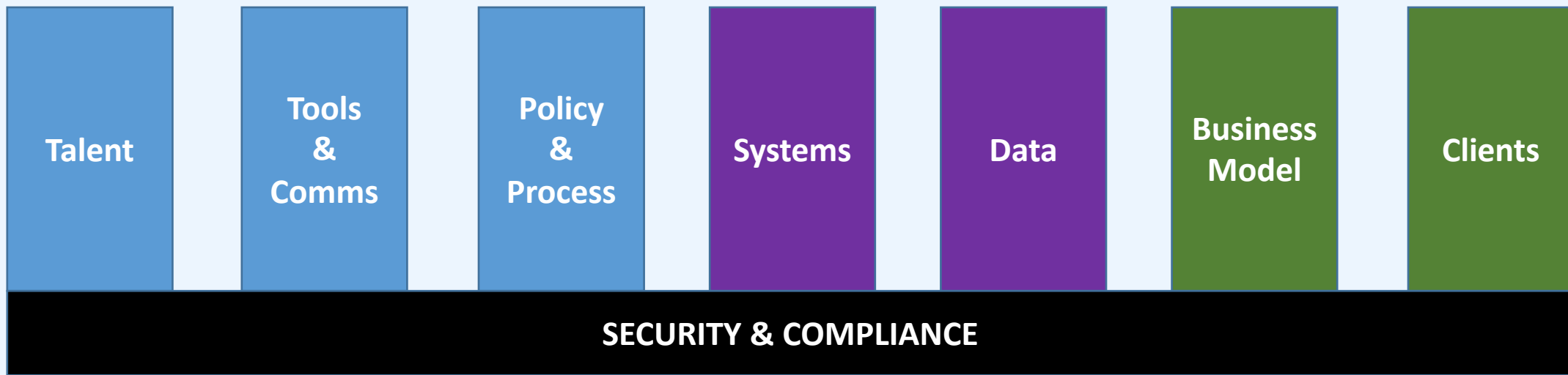


Envision
Technology Advisors, LLC

NIST

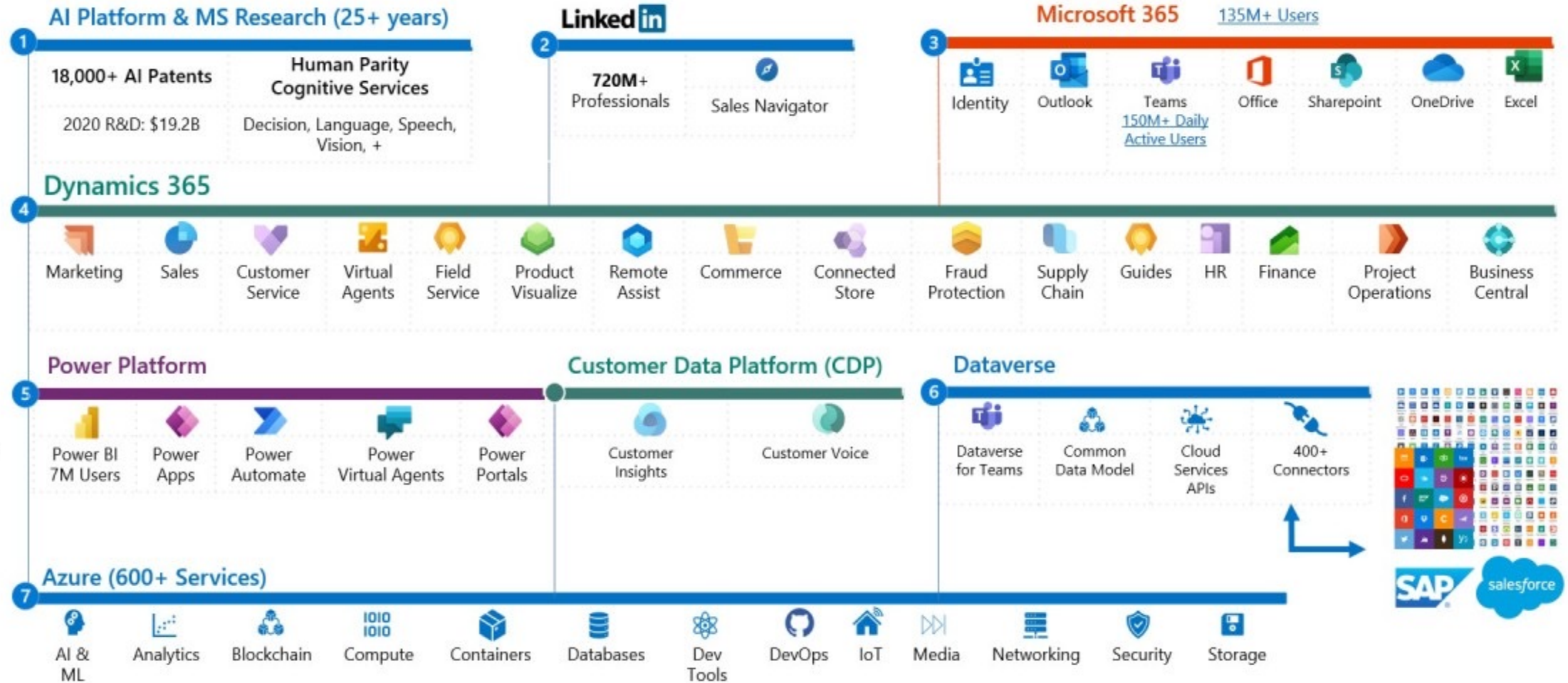


MIND THE GAP



Microsoft's Business Applications are built on **Azure**, using a **Common Data Model** that unifies data in **Dataverse**. **Power Platform** is the low code development platform for Microsoft's **Office 365**, **Teams**, **Dynamics 365** business applications (CRM & ERP) and integrates with **400+ services**.

- 64K+ Partners
- Analyst Recognition:**
- 1) Analytics & BI
 - 2) API Management (Full Lifecycle)
 - 3) Cloud DBMS
 - 4) Cloud Infrastructure
 - 5) Content Services Platforms
 - 6) CRM Customer Engagement
 - 7) CRM Customer Service Solutions
 - 8) CRM Lead Management
 - 9) CRM Sales Force Automation
 - 10) Data Integration Tools
 - 11) Data Science & ML
 - 12) ERP (Cloud)
 - 13) IoT (Industrial)
 - 14) Low-Code App Platforms
 - 15) Meeting Solutions
 - 16) Robotic Process Automation (RPA)
 - 17) Security: Access Management
 - 18) Security: CASB
 - 19) Security: Endpoint Protection
 - 20) Security: Ent. Info Archiving
 - 21) Security: Unified Endpoint Mgmt
- Industry Solutions



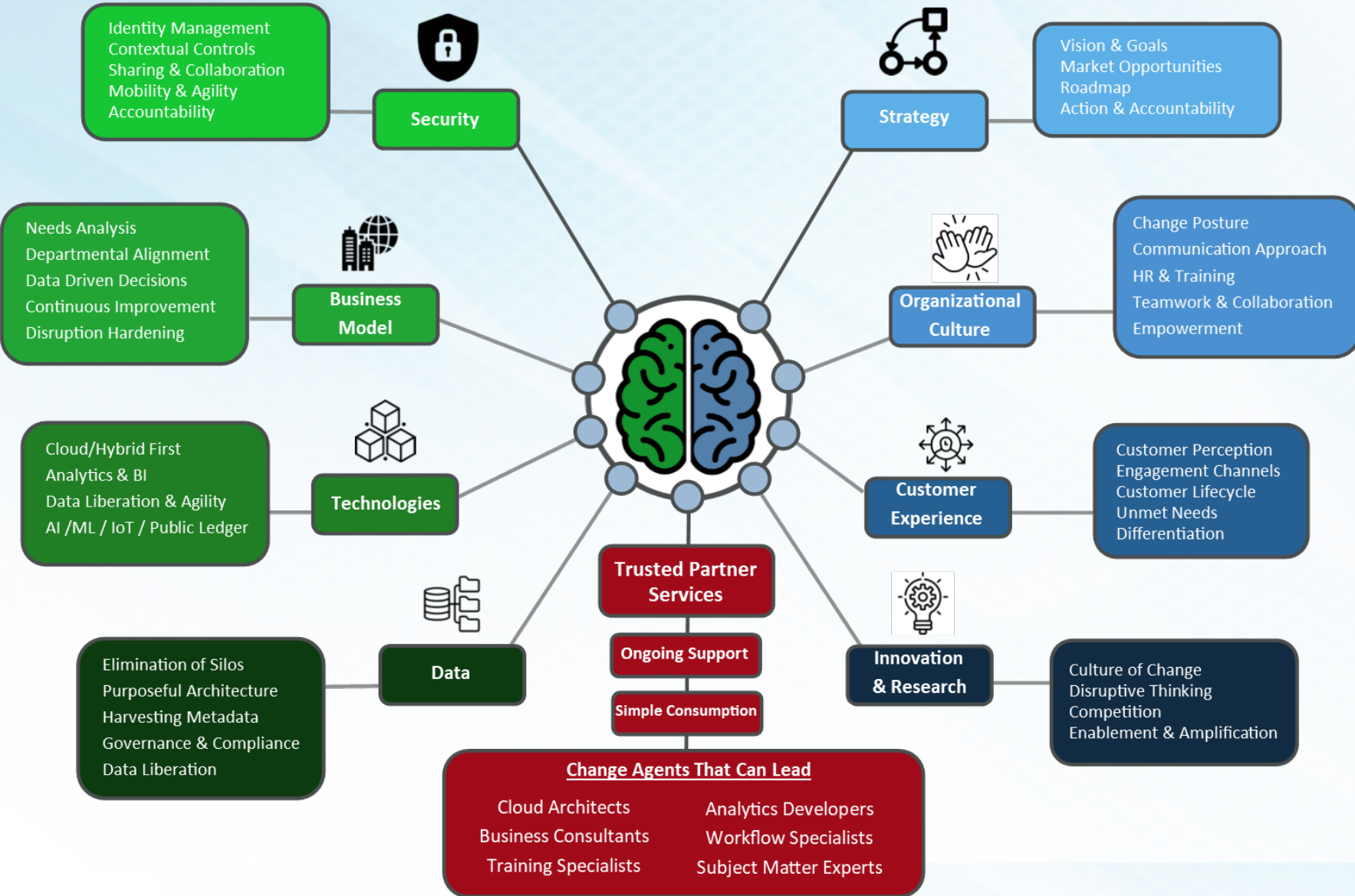
Security is the Launchpad for Change

Attributes of IT Leadership

- Strategic
- Human-centric
- Engaged in the community
- Technically knowledgeable
- Hands-on / Moving the ball forward
- Outcomes focused

Success Factors

- **A Culture of Security & Innovation is a top-down proposition**
- **Change is a team sport. Everyone needs to be excited and willing to work together without trying to preserve the past.**
- **To innovate and evolve, people need to feel safe.... think Maslow.**



Thank You
For Inviting Me!

The screenshot displays the Microsoft Teams application interface. On the left is a dark sidebar with navigation icons for Activity (27), Teams, Chat (1), Calendar, Calls, Stream, Flow, Files, and Help. The main area is split into two panes. The left pane, titled 'Teams', lists 'Your teams' including 'Todd's Workspace' (with sub-channels 'General' and 'Stay in Touch!'), 'The Rec Center', 'Envision General' (4 notifications), 'The Marketing Wolfpack', 'Envision Analytics', 'Management Analytics', 'Accounting and Operatio...', 'Management Team', and 'Quote Prep Team' (3 notifications). The right pane shows a post by 'Todd Knapp' at 6:38 PM, edited, with a 'Stay In Touch With Us!' header. The post content includes the text 'We love to collaborate with the community!' followed by social media links: Todd.Knapp@envisionsuccess.net, www.envisionsuccess.net/linkedin, www.envisionsuccess.net/youtube, www.envisionsuccess.net/twitter (@enviontech), and www.envisionsuccess.net/facebook. A 'Reply' input field and a 'New conversation' button are visible at the bottom of the post area.



THE RHODE ISLAND CEO COUNCIL

